

# Ringworm Intake

## PURPOSE

This document defines APA! policy and procedure for intake of ringworm positive cats.

## SCOPE

These policies and procedures apply to all staff and volunteers responsible for, or assisting with, APA! Cat Program and animal intake.

## POLICY

APA! staff and volunteers will intake ringworm positive cats in accordance with these documented procedures.

## OVERVIEW

Cats are brought into the ringworm program from surrounding shelters, as well as from other programs within APA!. The cats entering the program may have contracted the fungal infection from environmental spores prior to admission to a shelter, or contracted it during their time in the shelter. Cats with ringworm that are at risk of euthanasia in other shelters always have top intake priority, and everything possible should be done to accommodate these cats, even if the program is at capacity.

The main method for accommodating more cats involves setting up emergency overflow space until a foster can pick up the cat. Cats coming in from the neonatal ward or other APA! catteries have next priority, and should also be accommodated if possible. Cats in foster should be placed on a waiting list if the ringworm ward is at capacity and taken in on a first come, first served basis, with exceptions made for extreme circumstances.

All incoming cats must be combo tested prior to coming into the ward. Cats should be up to date on vaccinations and flea preventative. If an animal is unaltered at the time of intake, a spay/neuter surgery date should be scheduled. Medical records should also be reviewed and pertinent information such as vaccine reactions, FIV status, and any previous illness or injury that may affect current care given should be noted on cat's Weekly Weight Form. If there are any questions or concerns about a cat's medical history, contact the medical team immediately.

## PROCEDURES

### Intake

#### 1. Intake from APA! Program-No Signs of Illness

- a. If intake is from an APA! program (cattery, neonatal ward, or foster) and shows no outward signs of illness, the following steps should be taken:
  - i. **Staff Member** examines cat for illness, injury, and ringworm lesions, using Wood's lamp test to identify areas of fungal infection.
  - ii. If an incoming cat is already on medication for ringworm treatment, **Staff Member** fills out a Medication Tracker form according to the Terbinafine prescription for each cat.
  - iii. If ringworm treatment has already started, **Staff Member** notes the day it began and proceeds with oral ringworm treatment.
  - iv. **Staff Member** places completed Intake Form, Rabies certificate, microchip tag, and anything else brought in with the cat should be stored in the

appropriate folder in the Cattery. The med tracker and weekly weight tracker should be kept in the Ringworm Ward binder.

- v. **Staff Member** updates cat's location in ShelterLuv.

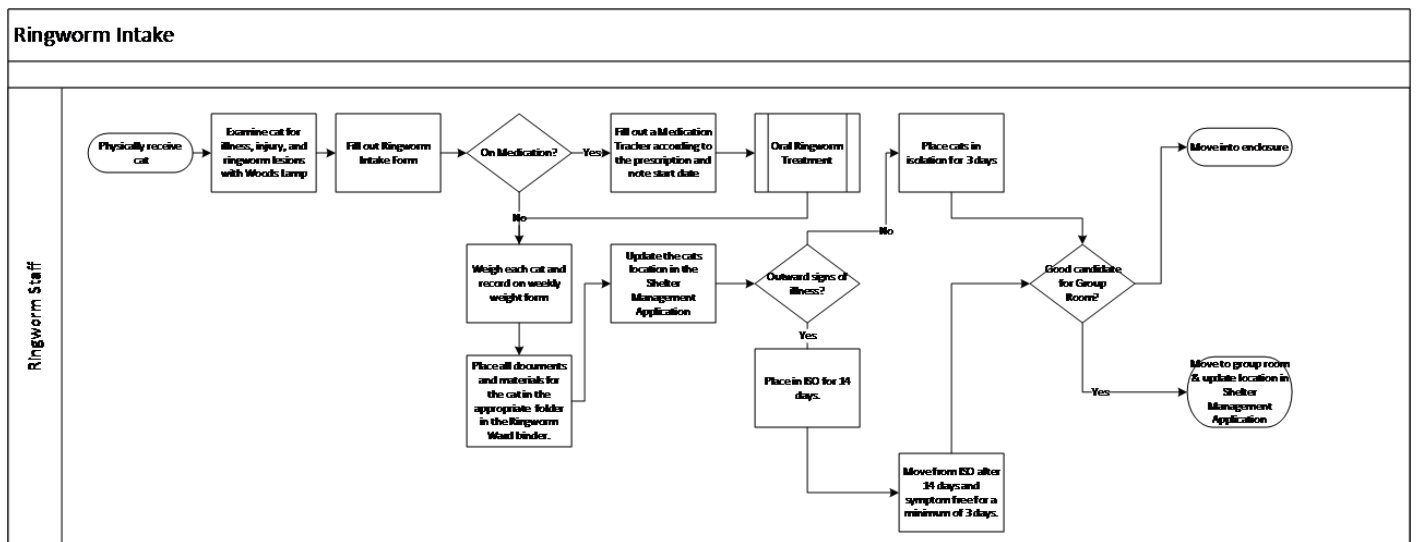
## 2. Intake Outside of APA!-Signs of Illness Present

- a. For cats coming in from other shelters or cats exhibiting signs of illness at time of intake:
  - i. Terbinafine should not be started until cat is deemed healthy enough to start.

### Group Rooms

1. Groups should be housed based on criteria such as severity of ringworm infection, age, and temperament.
2. Cats and kittens that require socialization may not be good candidates for group rooms, as they will need intensive handling and more one-on-one interactions with caretakers. Other cats, who may be more comfortable by themselves, may also not be good candidates for group rooms.

## PROCESS



## ADDITIONAL INFORMATION

For questions regarding this policy, contact document author.